



RailFX® Aluminum Railing Systems

QUOTE, INSTALL AND TENSION ... WITH NO TENSION.

LEAN ON US.

KEEP YOUR VIEW, AND YOUR OPTIONS, OPEN

CHOOSE BETWEEN OUR CONCEALED CABLE OPTIONS:

PROFESSIONAL 224 SERIES with concealed hardware

- easier tensioning
- quicker installation
- lower profile



BASIC 102 SERIES



Image shown with Professional 224 Series Hardware

DESIGN YOUR RAIL SYSTEM

01 CHOOSE AN INFILL OPTION



CABLE RAIL

- Modern See-Through Design
- 1/8" 316 Stainless Steel Cable*
- Up to 5' Post Spacing
- Low Maintenance



GLASS RAIL

- Unobstructed View
- Excellent Wind Break
- 1/4" Tempered Glass
- Custom Glass Options Available
- Up to 5' Post Spacing



PICKET RAIL

- Classic Design
- Economical
- 5/8" x 5/8" Picket
- Up to 6' Post Spacing

RailFX® Aluminum Railing Systems deliver an all-in-one solution for any project. Our team of experts makes sure you are taken care of at every step.

- Personalized quotes within 48 hours
- Stock colors ship within 3-5 days
- Cables & fasteners included with the system
- Seamless top rails are available in lengths up to 20 feet
- Easy to trim top rail on site
- All posts are pre-drilled for cable and conceal the fittings and hardware
- Custom colors available
- Glass and picket railing systems offered

AT RAILFX, WE'RE ALWAYS BUILDING BETTER WAYS TO SUPPORT YOU. LEAN ON US.

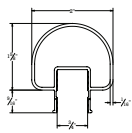
**For more information
visit RailFX.net**

*1/8" stainless steel cable is recommended for residential applications. Additional cable diameters available, contact your RailFX sales representative for more information.

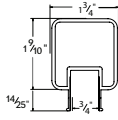
02 CHOOSE A TOP RAIL OPTION

POST TO POST RAILS

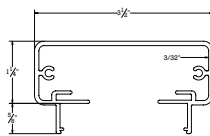
RFX100
ROUND TOP RAIL



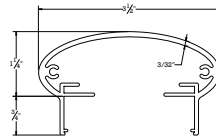
RFX250
SQUARE TOP RAIL



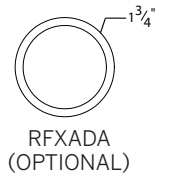
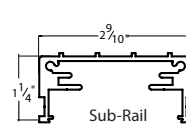
RFX200
FLAT TOP RAIL



RFX300
ELLIPTICAL TOP RAIL

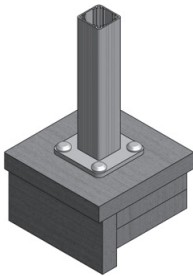


RFX400
RAIL FOR WOOD TOP*



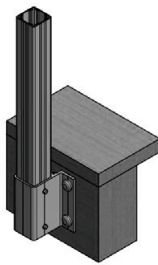
*Wood Top shown to illustrate finished look. It is not included.

03 CHOOSE A POST MOUNTING STYLE



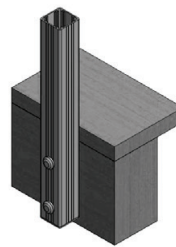
SURFACE MOUNT

For direct surface mounting to the deck, patio, floor or stair tread.
Pre-attached 3/8" thick base plate attached to post with (4) 2" case hardened stainless steel screws.



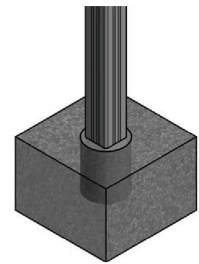
FASCIA MOUNT POST
(WITH BRACKET)

For side mounting directly to fascia or rim joist when decking or flashing extend beyond fascia board.
Post bracket holds posts 1-1/4" from fascia.



FLUSH MOUNT
(NO BRACKET)

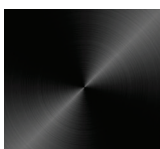
Post is mounted directly to fascia when no deck board or flashing overhangs fascia board.



CORE MOUNT POST

Post is set in hole in concrete and grouted in place with non-shrinking grout.

04 CHOOSE A FINISH COLOR



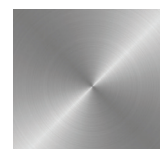
BLACK (STOCK)



WHITE (STOCK)



BRONZE (STOCK)



SILVER (STOCK)



CUSTOM*

10-YEAR WARRANTY

Colors may vary. Images shown represent approximate color only.

*Additional Cost

| QUOTE REQUEST FORM

BUSINESS NAME

CONTACT NAME

PHONE

FAX

EMAIL

CUSTOMER NAME

JOB NAME

SHIPPING ADDRESS

Phone: (206) 453 -1123 Fax: (866) 802-1690
Return to: sales@railfx.net

PLEASE FILL OUT COMPLETELY

RAILING INFILL OPTIONS:

- ☐ 1/8" Stainless Steel Cable ☐ Tempered Glass
☐ Aluminum Picket

RAILING HEIGHT:

- ☐ 36" ☐ 42" ☐ Custom: _____

BOTTOM RAIL (OPTIONAL W/ CABLE):

- ☐ Yes ☐ No

OPTIONS:

- ☐ Gate Single ☐ Gate Double

STOCK COLORS:

- ☐ Black ☐ White ☐ Bronze ☐ Silver
☐ Custom (Add 2 Weeks): _____

MOUNTING SURFACE:

- ☐ Concrete Slab ☐ Wood ☐ Composite Over Wood
☐ Other: _____

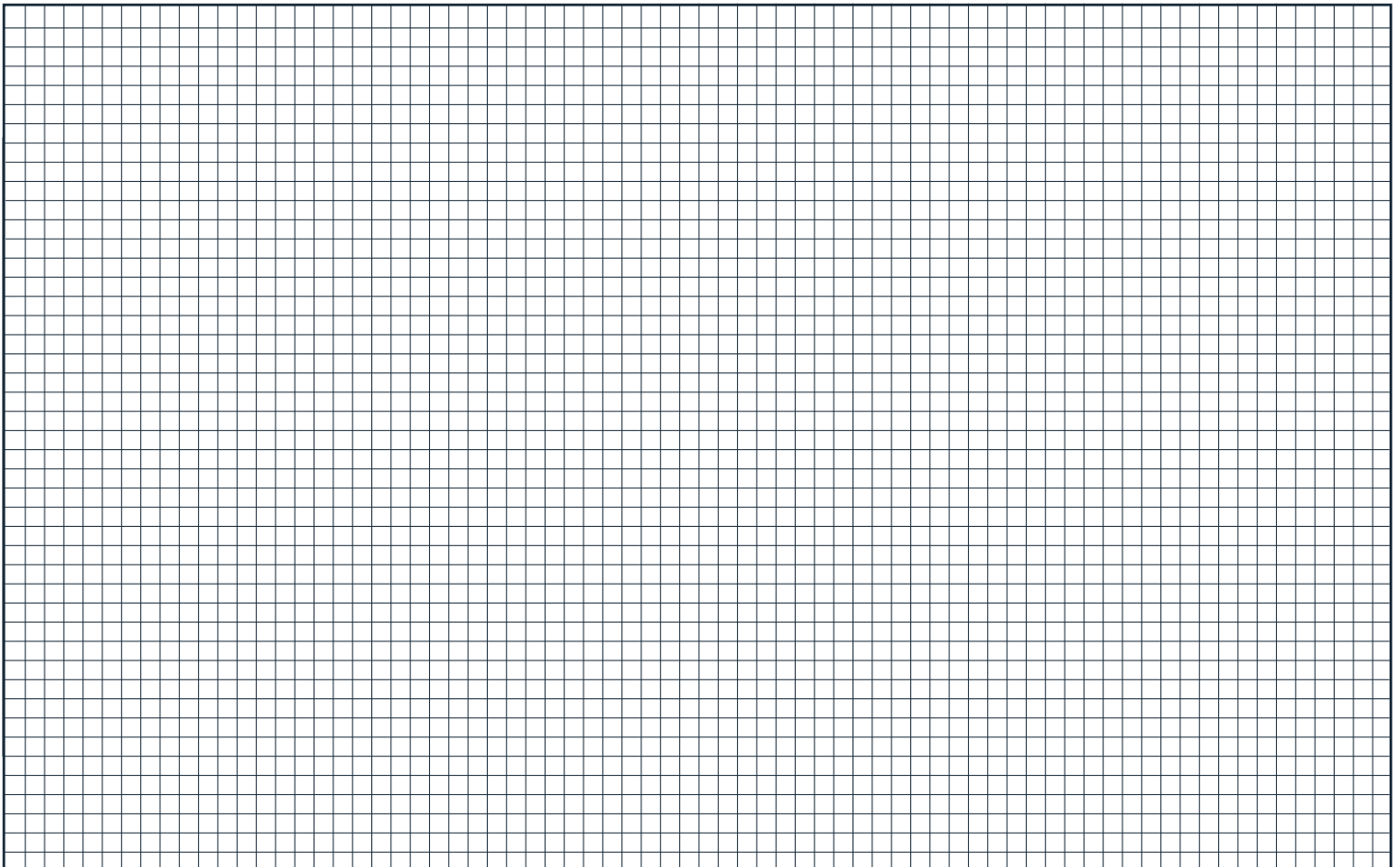
TOP RAIL OPTIONS:

- ☐ RFX 100 ☐ RFX 200 ☐ RFX 250
☐ RFX 300 ☐ RFX 400 ☐ RFXADA

POST ATTACHMENT OPTIONS:

- ☐ Surface Mount ☐ Fascia Bracket Mount
☐ Fascia Mount ☐ Concete Core Mount

SKETCH AREA





RAILFX

1002 East F St., Tacoma, WA 98421
(206) 453-1123

railfx.net / sales@railfx.net