

Contego ^{BS}

Protects when you need it!

Expand your living space and enhance the enjoyment of your home.

The best German engineered and manufactured awning components complimented with Sunbrella acrylic fabric to create a premium quality retractable awning. Elegant in design and durable... the essence of value!

Your home is one of a kind and your awning should be too. A custom-built retractable awning professionally installed, increases the value of your home.

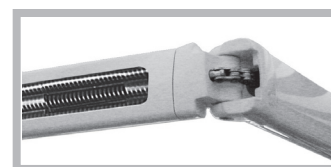
A wide selection of solid and striped fabric patterns plus four installation styles make the Contego BS a perfect complement to your home.

10 year manufacturer's warranty
10 year Sunbrella fabric warranty

"LIFE IS COOLER IN THE SHADE"



The shoulder bracket features a safety locking mechanism with a fully adjustable pitch.



Extruded aluminum folding arm with 2 or 3 springs provides great stability and is optimal for fabric tension.

Stainless steel flyer chain guarantees stability and strength.



MacDonald Awning & SIGNS

125 Weber St. W., Kitchener, On N2H 3Z8
1-800-363-8588 • 519-579-3950 • fx# 519-579-2533 • www.macdonaldawning.com

Contego^{BS}

Protects when you need it!

Advanced technology and superior materials ensure long term satisfaction.

The folding arms are made of powder coated extruded aluminum and withstand heavy loads. All screws and connecting elements are made of high-quality stainless steel.

Support Bar

The backbone of the awning is a 40mm steel square bar with 2mm walls. Galvanized and powder coated combined to ensure strength and durability.

Arms

The extruded aluminum arms have a height profile of 70/65mm and sectional thickness of 2.5mm on the back profile and 2mm on the front.

Front Bar

The front bar is one piece of extruded aluminum with 2mm thickness.

The Contego BS provides long-lasting durability, resilience and resistance to weathering.



With protective hood cover

Vario Valance

For additional privacy or when the sun is low the Contego BS features the availability of a vario valance. Drops up to 7'.

Widths: 8' to 23'

Projections: 6'7", 8'2", 9'10", 11'6" and 13'1"



INSTALLED ANYWAY YOU NEED

Wall, ceiling or rafter mounted: the heavy duty extruded aluminum mounting brackets are designed to meet all installation requirements. Eavestrough mount option also available.



Rafter Mount



Ceiling Mount



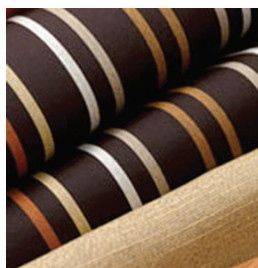
Wall Mount



Sunbrella is the world's leading manufacturer of 100% solution dyed acrylic fabric for awnings. Sunbrella fabrics are durable and easy to clean. Choose from a wide selection of solid and striped patterns.

10 YEAR WARRANTY

Visit www.sunbrella.com



ACCESSORIZE YOUR AWNING

Somfy is the world's leading manufacturer of specialized motors and control systems for retractable awnings. MacDonald Awnings uses SOMFY motors exclusively.

5 YEAR WARRANTY

Visit www.somfysystems.com



Professional Awning
Manufacturers Association

Improve your home with awnings, learn about the benefits and energy savings.

Visit www.awninginfo.com



MacDonald Awning is the North American Distributor of German engineered & manufactured awning components

Visit www.erhardt-markisen.de



systems, inc.

12820 Emery Way, Shakopee, MN 55379
• 800-566-0732 • 952-403-0805 • fx# 952-403-0822
• www.mvas.com